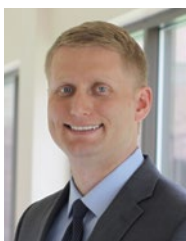

A Weekly Update
For The Employees of
North Central Health Care



NEWS YOU CAN USE



WEEKLY CONNECTION WITH MICHAEL LOY

Growing Our Family

On Monday of this week there were two great opportunities to welcome the employees of Lincoln Industries and Pine Crest Nursing Home to the NCHC family. At Pine Crest, we had a welcome picnic to welcome employees and Pine Crest's new Nursing Home Administrator, Zach Ziesemer, to the team. Thank you to everyone from the NCHC team who took time to help serve and welcome everyone. A special thank you to our NCHC Board members Romey Wagner and Bill

Metter for joining in the activities. It was a fun day.

Later that night, I participated in a town hall meeting with staff, families and funders for clients in the Lincoln Industries programs. The night began with heels seemingly ready to be dug in but ended with happy tears and a willingness to embrace the changes needed. It was a special point in time with some remarkable passion. Truly person-centered care on display. I want to thank Toni Keller as well as the staff at NCHC and Lincoln Industries for facilitating this important meeting. It was an important turning point in our going forward.

Our willingness to grow our family in Lincoln County is both challenging and extremely rewarding. As we end the year and go into next year, we will become a stronger organization with these changes and I look forward to serving more residents in Lincoln County than we ever have before.

Make it a great day,

Michael Loy

Wausau Campus Traffic Notice	4
Halloween Help!	5
Can You Donate Candy?	
Flu Shots!	7
On the Move!	8
Employee Transfers & Promotions!	
FREE LUNCH!	11
Find Out How!	
Monster Cookie Sale ...	12
Back for October!	



Mount View Care Center

has the 2nd-fewest hospitalizations per 1,000 long-stay resident days (0.61) of the 37 nursing homes within 50 miles. That 0.61 is 51% lower than the average of 1.25 across those 37 nursing homes.

Pine Crest Nursing Home

is one of just 3 nursing homes in Lincoln County.

*Find Out More at BenchMine.com

ADMINISTRATOR ON-CALL

x4488 or 715.848.4488
In the event of Phone System Outage, reference the O:drive "On-Call Information Folder" for Schedule and Cell Phone #'s.

**Monday, Oct. 7 –
Sunday, Oct. 13**

Michael Loy



Person-Centered
Shout out

**Nanette Griese,
Community
Treatment**

Why: Nanette went above and beyond by flogging our fleet vehicle and spraying down our waiting area to clean-up after a flea exposure for a client that is not even on her caseload. Thank you for stepping in and handling this professionally and promptly, Nanette! You're a rockstar.

Submitted by: Shandah Stewart





PHOTO OF THE WEEK



Submit A Great Photo From Your Week!

Submit your photo and description to: Email: jmeadows@norcen.org or Text: 715.370.1547. Please indicate Photo of the Week and include your name, who/what/where of the photo and why you are submitting.



"Mental Health Warriors - #BreaktheStigma!" – Submitted by Sheri Lawrence



WELCOME ZACH ZIESEMER
Pine Crest Nursing Home Administrator

North Central Health Care (NCHC) welcomes Zach Ziesemer to the Pine Crest Nursing Home as Nursing Home Administrator. Zach has served as a nursing home administrator since 2012, most recently at Markesan Resident Home, a not-for-profit organization in Markesan, WI. His background includes administration of skilled nursing, memory care, rehabilitative, respite and at-home care. Zach recently completed his Master of Business Administration from University of Wisconsin – Eau Claire.

"Zach's leadership will be instrumental in leading Pine Crest through the transition of the management agreement with North Central Health Care. Starting in January 2020, NCHC will be operating two of the largest nursing homes in the state of Wisconsin and we are pleased to welcome Zach to our team as we enter the next stage in our partnership with our communities," states Kim Gochanour, Executive of Nursing Home Operations at NCHC.

For Zach's full press release and announcement, please visit www.norcen.org/News



red eye
brewing company



Slices for Sharing to Benefit Community Corner Clubhouse in Month of October

Each month Red Eye Brewing Company in Wausau selects a local non-profit to benefit from Slices for Sharing. Customers can order a Slices for Sharing Specialty Pizza and for the entire month, \$2 from each pizza purchase is donated directly to that organization!

Ask for the October "Slices for Sharing Pizza"
Red Eye Supreme Pizza
\$2 from each Pizza will be donated to



**COMMUNITY CORNER
CLUBHOUSE**

*Opening the Door to Hope, Recovery & Opportunity
for People with Mental Illness*



WAUSAU WELCOME DESK CHANGES

Discontinuing Any Purchases Made at Welcome Desk

The safety of our employees and those we serve is always a top priority. Because of this, we are making some changes for the Switchboard Team who sit at the Welcome Desk at the Yellow Flag Entrance in Wausau. The Switchboard/Welcome Desk staff will **no longer be performing any monetary transactions**. The team will no longer pick up the cash box in the Cashier's Office or perform sales for the Kwik Trip Cards or any other monetary transactions at the Welcome Desk. All inquiries should be directed to the Cashier's Office Staff during business hours.

This change is precautionary and not a reaction to any event that has taken place. We want to ensure that our employees feel safe and that regular monetary transactions take place out of the public view in a more appropriate environment. We do understand that it may cause inconvenience for activities like fundraisers, however the Cashier's Office is only a few feet away. We apologize for any inconvenience. Thank you for your support of this change to our operations.

FOOD DELIVERED TO NCHC FACILITIES

Be Sure to Communicate Where Delivery Drivers Should Go

Many employees at all our locations order food which is delivered to our NCHC facilities. Recently, frustrations have been higher with those food delivery drivers as they just don't know where to go! Let's face it, we have some large facilities and



construction which can lead to confusion. To ease their troubles and also to ensure you get your food, please be sure to give food delivery drivers appropriate instructions with which entrance they need to arrive at. Our entrances, specifically on the Wausau Campus, have flags and also door numbers. Use these to your advantage and meet your delivery drivers at the entrances to pick up your food. It also takes NCHC staff resources in our Switchboard and Patient Access areas to try to locate you when a delivery driver gets here, when they could be helping clients, patients, residents and visitors.

Thank you for your attention on this. These little things help make everyone's day go smoothly!

SAFETY SNIP-ITS

Security Officer Wausau Campus

The Wausau Campus has Per Mar Security available on Campus. They operate from 3:00 pm to 7:00 am daily – 7 days a week.

How to Reach Wausau Campus Security

Call Crisis: Non-Emergency: (715) 848-4366; x4366,

In an Emergency: (715) 848-4599; x4599

Crisis staff will be in contact with Per Mar by the use of the cell phone when they are away from the Crisis Services area.

Per Mar Shift Cell: (715) 581-8887



REMINDER: REMEMBER TO PAY FOR YOUR COFFEE

Boxes are available in the Mount View Care Center Dining Rooms and the Wausau Campus Cafeteria for staff to pay for coffee. Coffee offered in these locations is not free. Food Services has seen a drastic reduction in payments for coffee, however no reduction in consumption of coffee at these locations. Thank you for your attention and for paying for your morning Cup-a-Jo!



New time clock from UltiPro.

TIMECLOCK CHANGES

News from Human Resources

UltiPro integrates with the new Human Resources, payroll and accounting system being implemented at the same time. You will physically see some changes around our various locations as new timeclocks were installed earlier in September. Staff will receive notification via email, communication boards and from your managers as to how to use the new time clocks for punching in and out. Stay tuned for more details as we bring the full use of UltiPro on board over the next few weeks.

WERE YOU UNABLE TO ATTEND 3RD QUARTER EMPLOYEE UPDATES?

Want to See the Presentation Again?

We want all employees to be able to attend the Employee Updates Sessions to connect with leaders, ask questions, and meet with team members you may not regularly have the opportunity to. However, we do know that serving in health care, there are instances in which you are just not able to make it or wish to view the presentation over again.

<https://youtu.be/o7TsP2VMXu8>

The video is also available here: O'drive: Employee Updates folder contains the complete slide shows and videos for all Employee Update sessions.





NCHC TRAFFIC NOTICE

Road Construction Near Wausau Campus on Sturgeon Eddy Road beginning October 7, 2019

As part of the project to replace the sewer siphon lines across the Wisconsin River it will be necessary to replace the sanitary sewer interceptor lines on Memorial Park Road and on Sturgeon

Eddy Road from Wisconsin Street to Memorial Park Road. The replacement of these sewer interceptor lines will require closures of both Sturgeon Eddy Road and Memorial Park Road in these areas.

Sturgeon Eddy Road is major entry point for employees and visitors to the Wausau Campus. As part of our commitment to Person-Centered Service, please inform patients, residents, clients, visitors and employees on your team of the detours around the Wausau Campus. Please allow additional time for travel.

Traffic will be detoured at Wisconsin Street on the north end of the project and at Weston Avenue on the south side of the project. (See map below)

The following closure dates are anticipated (Weather dependent):

- Memorial Park Road: Monday, Sept. 30
- Sturgeon Eddy Road: Monday, October

Memorial Park Road is anticipated to be closed for a minimum of 2 weeks. Sturgeon Eddy Road is anticipated to be closed for a minimum of 6 weeks.

Please slow down and use caution while taking detours. There are many small children in the South East Side neighborhood as well as an elementary school.

Thank you for your attention on this important traffic notice.

Give someone a big shout out and thank them for their Person-Centered Service!

Send your SHOUT OUTS to jmeadows@norcen.org.



TO: Gerald Krueger, Kimberly Moore, Crisis Team and Terry Kaiser

"A strong smell was reported in the hallway leading to Lakeside Recovery. Crisis was notified and an emergency request for maintenance was submitted. A fire was prevented because of the quick work of Gerald who reported the smell, Crisis who reported it immediately to maintenance, and Marathon County Maintenance who responded. Great work team! This is what Partnership looks like!"

– Submitted by Jennifer Peaslee, Quality & Transformation Director





Oh, BABY!



Congratulations to Lauren Bessa and her family! Lauren is an Outpatient Therapist in Antigo. They welcomed their son, Tait, on September 21!



Do you have a birth announcement you want to share with our NCHC Family? Send your announcement and picture (if desired) to your manager for sharing in the *News You Can Use*. Monthly, we will include all the newest members of our NCHC family. Be sure to include: Employee's Name, Department, any other family member names (spouse, partner, siblings) and the name and birth date of your little one. We love photos, too, but we respect your privacy, so share what you wish, if you wish!



HALLOWEEN CANDY DONATIONS WANTED!

Can You Donate?

Halloween is quickly approaching, and the Activities Department is in need of small wrapped candies for our safe trick-or-treating taking place on Thursday, October 31 from 3:00 to 4:30pm.

Candy donations can be dropped off in the Mount View Care Center Information Station or 1st Floor Activity Office. Questions can be directed to Sandy at ext. 4305. We thank you for your donations!

TRICK-OR-TREATING AT MOUNT VIEW CARE CENTER

Thursday,
October 31, 2018

3 – 4:30 pm

Open to Public!





tidbits on benefits

WELLNESS CORNER

Submitted by Sherry Gatewood, PA

SWIMMER'S EAR

With school and YMCA swimming sports taking place, here is some information for Aspirus on Swimmer's Ear also known as Otitis Externa. It can affect adults as well. Especially if also swimming frequently or required to wear ear plugs.

What is swimmer's ear?

Swimmer's ear is an infection of the skin lining the ear canal. This problem is most common among swimmers or children that spend a lot of time in water. If your child has swimmer's ear, he or she may have the following symptoms:

- Itchy and painful ear canals
- Pain when the ear is moved up and down
- Pain when the tab overlying the ear canal is pushed in
- Ear feels plugged up
- Slight amount of clear discharge at first (without treatment, the discharge can become yellowish).

What is the cause?

Swimmer's ear occurs when your child's ears have been in the water for long periods of time. When water gets trapped in the ear canal the lining becomes damp, swollen, and prone to infection.

Children are more likely to get swimmer's ear from swimming in lake water, compared to swimming pools or the sea. During the hottest weeks of the summer, some lakes have high levels of bacteria. Narrow ear canals also increase the risk of swimmer's ear. Cotton swabs also contribute to the problem by causing wax build-up which traps water behind it.

Suspect a middle ear infection instead, if your child also has a cold, a fever, and no increased pain with pushing on the ear tab.

How long does it last?

With treatment, symptoms should be better in 3 days and cleared up in 7 days.

How can I take care of my child?

- Antibiotic-steroid eardrops for severe swimmer's ear. (These require a prescription for the eardrops prescribed by your healthcare provider. Run 5 eardrops down the side of the ear canal's opening so that air isn't trapped under the drops. Do this 3 times a day. Move the earlobe back and forth to help the eardrops pass down. Continue using the eardrops until all the symptoms are cleared up for 48 hours.

- White vinegar eardrops: For mild swimmer's ear, use half-strength white vinegar eardrops. Fill the ear canal with white vinegar diluted with an equal amount of water. After 10 minutes, remove it by turning the head to the side. Do this twice a day until the ear canal gets back to normal.

- Pain relief. Use acetaminophen (Tylenol) or ibuprofen (Advil) for pain relief as needed.
- Swimming: Generally, your child should not swim until the symptoms are gone. If he is on a swim team, he may continue but should use the eardrops as a rinse after each swimming session. Continued swimming may cause a slower recovery but won't cause any serious problems. Check with the health care provider.

How can I help prevent swimmer's ear?

First, limit how many hours a day your child spends in the water. If you swim for exercise, the same applies to adults. The key to prevention is keeping the ear canals dry when your child is not swimming. After swimming, get all water out of the ear canals by turning the head to the side and pulling the earlobe in different directions to help the water run out. Dry the opening to the ear canal carefully. If recurrences are a big problem, rinse your child's ear canals with rubbing alcohol each time he finishes swimming or bathing to help it dry and kill germs. Another helpful home remedy is a solution of half rubbing alcohol and half white vinegar. The vinegar restores the normal acid balance to the ear canal.

Ask your healthcare provider if your child should use ear plugs or a swimming cap.

Common mistakes:

- Do not put cotton swabs in ear canals. They increase earwax buildup. The earwax then traps water behind it and increases the risk of swimmer's ear.
- Rubbing alcohol is helpful for preventing swimmer's ear but not for treating it because it stings an infected ear too much.

When should I call my child's healthcare provider?

Call IMMEDIATELY if:

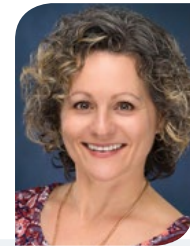
- The ear pain becomes severe.
- Your child starts acting very sick.



Call during office hours if:

- The ear symptoms are not cleared up in 7 days.
- You have other concerns or questions.

Written by Barton D. Schmitt, MD, author of "My Child Is Sick,"



Sherry Gatewood, PA

EMPLOYEE HEALTH & WELLNESS CENTER

1100 Lakeview Drive, Wausau, WI
North Central Health Care Campus
Door 25

Schedule an Appointment:
715.843.1256 or MyAspirus.org

Clinic Hours

Monday - Wednesday - Friday: 8:00 am - 4:30 pm
Tuesday: 6:30 am - 3:00 pm
Thursday: 10:00 am - 6:30 pm





Did YOU Get Your Flu Shot Yet?

- ADS/Pre-Voc./Group Homes Jenni Kessen, RN
BHS/Crisis/MMT..... Kathy Buckli and John Ward
Community Treatment/Outpatient Services
..... Linda Handrick, Nurse Manager
Nursing Home (MVCC) Amiee Muraski, RN
Cheryl Rye, Nurse Manager
Deanna Johnson, PM Supervisor
Natasha Sayles, Nurse Manager

-
- get your
flu
shot
here!

**ALL
EMPLOYEES
HAVE UNTIL
NOV. 1 TO
GET THEIR
FLU SHOT!**



Influenza or "flu" can cause serious illness. Vaccination is the best way to protect yourself and your family.



Cover your mouth and nose with your sleeve or a tissue when you cough or sneeze. Toss your used tissue in the waste basket and wash your hands.



Wash your hands often with soap and water or use an alcohol-based hand cleaner.



If you touch surfaces with the flu virus, you can get the flu by touching your eyes, nose, or mouth.



Flu viruses go wherever you go when you are infected. Stay at home and check with your healthcare provider when needed.





Position Posting

Title: Care Coordinator **Status:** Full Time

Location: Residential Services

<http://bit.ly/NCHCCareCoordinator>

The Residential Care Coordinator is a para-professional position with responsibility for the general operation within a group home and/or supported apartment setting. Primary duties are to promote a supportive, family-like environment, provide supervision of Residential Care staff, Coordination of resident health care and monitoring and scheduling of systems as required to meet accreditation and state and fed regulatory requirements.

Education and Experience Requirements

- Ability to communicate effectively
- Valid Wisconsin driver's license and appropriate auto insurance coverage as required by North Central Health Care.
- Must have the use of a personal vehicle.

Preferred

- Current Certified Nursing Assistant certificate from the Wisconsin Nurse Aides Registry
- One to three years' experience in the human services field.

Position Posting

Title: Group Home Manager **Status:** Full Time

Location: Residential Services

<http://bit.ly/NCHCGroupHomeMngr>

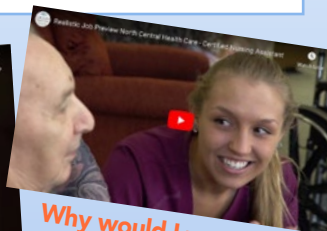
This is professional work with administrative responsibility and supervision of direct care of persons with developmental disabilities and/or chronic mental illness living in community residences and the employees working there. It is the responsibility of this position to coordinate the general operation of the home and to ensure that all health, safety, and sanitation standards are met within the homes.

Education and Experience Requirements

- Associate degree or certification in health care field earned at an accredited school.
- One to three years relevant experience
- Valid Wisconsin driver's license and appropriate auto insurance coverage as required by North Central Health Care.
- Must have the use of a personal vehicle.

Preferred

- Three to five years relevant experience



What's it like to work in Food Services?

What does a Dietary Aide do?

Find out with a realistic job preview of some amazing opportunities at NCHC!

www.norcen.org/RJP

ON THE MOVE!

Congrats Cailin Hargraves!

Congratulations to Cailin Hargraves for a recent transition from Hospitality Assistant to CNA in Reflections Long Term Care!

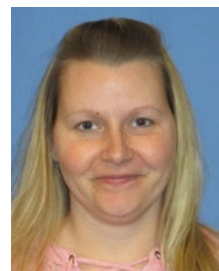
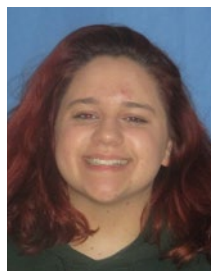


Congrats Hannah Metz!

Congratulations to Hannah Metz for a recent transition from Hospitality Assistant to CNA in Reflections Long Term Care!

Congrats Chloe Nylund!

Congratulations to Chloe Nylund for a recent transition from Food Services to Hospitality Aide in Reflections long Term Care!



Congrats Mandy Sikorski!

Congratulations to Mandy Sikorski for her recent transition from Registered Nurse in Community Treatment to Outpatient Psychiatry!



BENEFIT OPEN ENROLLMENT PERIOD COMING UP OCT 21 – NOV 1

Make Your Selections and Changes for 2020 Benefits

Every year you have the opportunity to review your benefit choices and make changes to your benefits for the following year. That time is now. The 2020 Open Enrollment runs from October 21 until November 1. It's important that you take the time to consider all your options so you can make the right choice for you and your family.

Open Enrollment is the time to add, change, or cancel any of your current insurance plans for the upcoming plan year (January 1, 2020 – December 31, 2020).

A 2020 Benefits at a Glance Guide will be available at the Benefit Enrollment Meetings and emailed out to all-staff. The YOU Benefit 2020: A Comprehensive Benefit Resource Guide for North Central Health Care Employees will be available electronically this year. Watch your NCHC email for how you can get a printed copy if needed.*

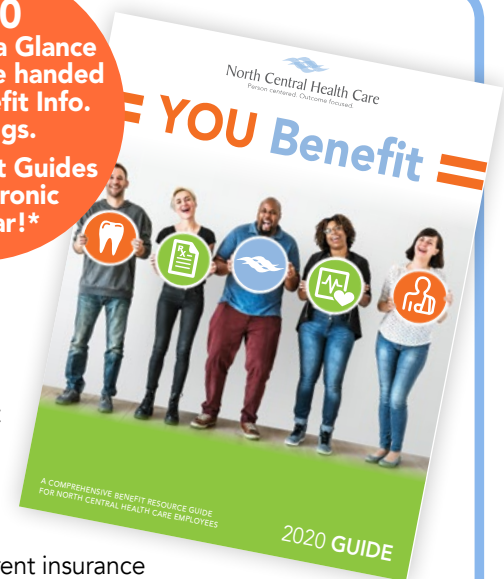
Benefit Information Meetings Held October 18th – 30th

To further assist employees in understanding benefits that are available, a series of Open Enrollment Benefit Information Meetings are scheduled. We strongly encourage employees to attend one session and take advantage of the opportunity to ask questions and speak with representatives.

10/18	Wausau Campus Theater Wausau Campus Theater	10:00 am - 11:00 am 1:30 pm - 2:30 pm
10/21	Merrill Center Merrill Center Mount View, 2nd Flr. Dining Rm	9:00 am - 10:00 am 10:00 am - 11:00 am 2:00 pm - 3:00 pm
10/22	Wausau Campus Theater	9:00 am - 10:00 am
10/23	Wausau Campus Theater	11:30 am - 12:30 pm
10/24	Wausau Campus Theater	8:30 am - 9:30 am
10/28	Antigo Center Antigo Center	12:00 pm - 1:00 pm 1:00 pm - 2:00 pm
10/29	Wausau Campus Theater	10:00 am - 11:00 am
10/30	Wausau Campus Theater	3:00 pm - 4:00 pm

MARK YOUR
CALENDAR
TO ATTEND A
BENEFIT INFO
MEETING!

2020
Benefits at a Glance
Guide will be handed
out at Benefit Info.
Meetings.
YOU Benefit Guides
are Electronic
this Year!*



* In an effort to conserve our resources, the YOU Benefit Guides will be available electronically this year and employees will receive a smaller concise version. Employees will receive a link to the full YOU Benefit Guide electronically. If you prefer a printed copy, watch your NCHC email for notices of YOU Benefit Booklet availability.



Wisconsin Deferred Compensation (WDC) Program Offered By Your Employer, North Central Health Care Facility



Helping You Turn
Over a New
Retirement Leaf

Meet with your WDC Advisor, Shawn Bresnahan

The Wisconsin Deferred Compensation (WDC) Program is a powerful tool to help you reach your retirement goals. Join a WDC Retirement Plan Advisor at an upcoming meeting.

If You're Just Starting to Save ... and need to enroll in the WDC, go to www.wdc457.org and click **REGISTER** or click **here**. Use the Plan Number **98971-01** and the Plan Enrollment Code **UoNeJ3pb** expiration date 10/1/2019.

If You've Been Saving for a While ... you may want to review your income projections, savings rate and investment strategy. For a portfolio review, meet with your local Retirement Plan Advisor or call **(877) 457-9327**.

If Retirement is Just Around the Corner ... we are here to assist you in making a smooth transition to retirement. Remember, when you stay informed and engaged, you can make your WDC account a more powerful retirement planning tool. Watch for pre-retirement group meetings near you!

Changing your payroll contribution or updating your beneficiary is easy!

Log in at www.wdc457.org or call the WDC Service Center at **(877) 457-9327**. Do you have questions about Wisconsin Retirement System (pension)? Please call WRS directly at **(877) 533-5020**.

WDC Program Meeting Schedule

Date	Time	Topic	Location
Wednesday, November 6, 2019	11:00 am – 1:30 pm	Account Review Sessions	North Central Health Care Facility 1100 Lake View Drive Badger Room Wausau, WI 54403

Go to www.wdc457.org to schedule your appointment.

Securities offered or distributed through GWFS Equities, Inc., Member FINRA/SIPC and a subsidiary of Great-West Life & Annuity Insurance Company. GWFS Equities, Inc. registered representatives may also be investment adviser representatives of GWFS affiliate, Advised Assets Group, LLC. Representatives do not offer or provide investment, fiduciary, financial, legal or tax advice or act in a fiduciary capacity for any client unless explicitly described in writing. Retirement products and services provided by Great-West Life & Annuity Insurance Company, Corporate Headquarters: Greenwood Village, CO. Great-West Life & Annuity Insurance Company of New York, Home Office: New York, NY, and their subsidiaries and affiliates, including registered investment advisers Advised Assets Group, LLC and Great-West Capital Management, LLC. RO003093-0719



PLANNING ON TRAVELING? Tips from Our Purchasing Experts

Thanks to Kelly Henke-Kaiser for this great tip on travel. As Kelly makes reservations, books flights and gets things aligned for travel for our employees, she wants you to be aware of these new requirements for travel. Thinking of vacationing? Think ahead! Thank you Kelly!

New Federal I.D. Requirements
Beginning October 1, 2020, you will need a REAL ID or driver's license. In an effort to thwart terrorism in travel a law was passed in 2005 to take steps to verify travelers' identity. What does that mean? If you might fly within the U.S., visit a military base or other federal building, the Department of Homeland Security will require identification that is REAL ID compliant (or show another acceptable form of identification, such as a passport). If you have a new driver's license and it does not have a star in the upper right corner, it is not REAL compliant. I recently obtained mine and the DMV is very particular as to the documents you present. You need a CERTIFIED copy of your birth certificate, marriage license(s) and divorce document(s). If you need to obtain these there is a cost from \$10-\$25 per copy. Go to the State of Wisconsin DMV website for details.

Baby Business 3: NO SMALL MATTER

FREE Documentary Screening

Wednesday, October 23, 2019

Westwood Conference Center

1800 Westwood Center Blvd, Wausau



WHY: Over the last eight years, Marathon County has lost 55% of its regulated child care programs. The limited access to quality child care plays a large role in worker shortage and the ability to retain and attract talented employees.

WHAT: With stories and surprising humor, this event will address:

- The critical importance of high quality affordable child care programs – for the current and future workforce.
- How investing in working parents and early childhood education yields high rates of return.
- The long term impact of early life experiences on brain development over a lifetime.

WHO SHOULD ATTEND:

- Business leaders, local elected officials, medical professionals, educational leaders, early childhood educators, parents and caregivers.

Join us to learn more about what is happening locally to help businesses and families in our area. **FREE** and open to the public.

TO REGISTER (Registration highly encouraged – seating is limited): Visit <https://www.secure.unitedwaymc.org/BabyBusiness3> or call United Way of Marathon County at 715-848-2927.

SCHEDULE:

5:30-6:00 p.m. Reception/Light food
6:00-6:10 p.m. Welcome, Opening Address
6:10-7:25 p.m. Documentary Screening
7:25-8:15 p.m. Featured Experts
8:15-8:30 p.m. Conclusion & Call to Action

FEATURED EXPERTS:

- Dr. Dipesh Navsaria, MPH, MSLIS, MD
- Rachel Giannini, Early Childhood Advocate Featured in No Small Matter and Video Blog Host

Supported by:



NEWS, UPDATES, LINKS,
STORIES, PHOTOS,
VIDEOS!

GET SOCIAL!
#IamNCHC



**Do You Currently Donate to United Way
through NCHC Payroll Deduction?**

If so, you are invited to the 

Appreciation Tailgate Party!

FREE LUNCH FOR CURRENT DONORS!

October 9, 2019
Wausau Campus Cafeteria

10:30 am – 1:30 pm

\$4

For Non-Donors and
Public Purchase



**FREE Brat
or Hot Dog,
Cookie &
Chips**

For Current Payroll
Deduction Donors

**All Proceeds Benefit Our
Local United Way**

**All Employees are Welcome! Come and Learn How to Become A Donor when
NCHC Kicks Off Our 2019 United Way Campaign in Early November!**



Monster Cookie Dough Sale

\$8 Per Tub

Makes approximately 12 Monster Cookies

JUST IN TIME FOR
HALLOWEEN

Order Online*
by October 11
<http://bit.ly/MCsale2019>



NO EARLY PAY/PICK-UPS AVAILABLE.

Pay at pickup only - Quick Charge, Cash or Check

Wednesday, Oct. 23 from 3 – 5 pm or Thursday, Oct. 24 from 1:30 – 5:00 pm

Profits to benefit the United Way efforts. Cookie dough must remain refrigerated or frozen after pick-up.

*Paper order forms available in the Wausau Campus Cafeteria.



WHAT'S 4 LUNCH?

WAUSAU CAMPUS CAFETERIA

Cafeteria Hours: Open 7am – 5:30 pm

A Cashier is on duty from 9:00am – 10:00am, 10:30am – 1:30pm.
When a cashier is off duty, an honor system is used for food purchases.

**Serving Soup, Salad and
Lunch Entrée Option
Monday – Friday.**

All hot sandwiches,
hot foods and cold bar items
are \$.35/ounce.

Soup: \$1.50 Cup | \$2.25 Bowl



OCTOBER 7-11, 2019

MON 10/7Vegetable Beef Soup

BBQ on a Bun

Roast Pork

Seasoned Spinach
Scalloped Potatoes
Tasty Tapioca

TUES 10/8.....Stuffed Green Pepper Soup

Chicken Supreme on a Kaiser

Herbed Turkey

Mixed Vegetables
Steamed Rice
Strawberry Jello

WED 10/9Chicken Vegetable Soup

Hot Turkey on a Croissant



**Appreciation
Tailgate Party for
Current Donors!**
See page 11

Herb Lemon Chicken

Green Beans
Noodles
Fruit Fling

THUR 10/10...Taco Soup

Pork BBQ on a Bun

Pork Carnita

Spanish Rice
Pico de Gallo
Peanut Butter Bar

FRI 10/10.....Cheese Soup

Tuna Melt

Pepper Steak

Creamed Corn
Mashed Potatoes
Fruit Cobbler



Marathon County
Employees Credit Union

Just in Time for Fall!



Open a new credit card between 10/1/2019 and 11/30/2019 and receive a special introductory rate of 1.99% APR* until 5/31/2020 on purchases and balance transfers.

Accounts opened between 10/1/19 and 11/30/19 will receive 1.99% introductory APR* until 5/31/2020. After promotional time frame expires, remaining balance will migrate to standard APR applicable on your account.
*APR = Annual Percentage Rate

Contact Us Today for Details!

Peter.Wolf@co.marathon.wi.us
715-261-7685 • 400 East Thomas Street • Wausau, WI 54403

WELCOME OUR NEW EMPLOYEES

October 7–11, 2019

Community Treatment Youth

Amanda Mathis – Case Manager

Crisis

Rochelle Brown – BH Tech

Food Services

Scott Augustine – Dietary Aide
Michael Mammano – Dietary Aide
Chao Yang – Dietary Aide

Hospital - BHS

Katie Gajewski – BH Tech
Kayley McColley – BH Tech

Outpatient Psychiatry

Stephanie Eversdyk – Certified
Medical Assistant

Quality

Linda Steffl – Compliance Auditor

Reflections Long-Term Care

Laura Liddy – Hospitality Assistant
Samantha Waschick – CNA

Pine Crest Nursing Home

Zach Ziesemer – Administrator
Heather Brownell – Social Services
Linda Dotter – Dietary Manager
Ryan Hanson – Director of Nursing
Samantha Jaeger – Central Supply &
Restorative Nurse Manager
Angie Lepak – Payroll
Gayle Preu – Business Office Mngr.
Bruce Slaminski – Environmental
Services Director
Jennifer Smith – PM Supervisor
Jessica Steinhagel – Inf. Prevention

Staff Development

Brianna Vandenheuvel –
Activity Director